

T-Stat 2.0

34-MED-TSTAT
info@spectros.com

Tissue Oximeter & Single Use Sensors



T2 Brochure



Training Videos



POWERING ON T-STAT



- 1.) Press toggle switch to the ON position (—).
- 2.) Plug in the medical grade power cord that came with the monitor.
- 3.) Press the silver illuminated button on the front panel to turn on the monitor. If the blue light does not illuminate, hold down for 10 seconds to reboot.

4.) T-Stat will automatically run a SELF TEST. After the self test is complete the T-Stat is ready for use.

T-Stat

- Software Version Pass
- Software Integrity Pass
- Optical Hardware Pass
- Probe Socket Pass
- Algorithm Test
- Memory
- Sound Test
- Battery Backup

T-Stat 2.0 Tissue Oximeter
Software
2.0.12.CR

■ Self-Test

BATTERY LIFE = 1 hour

To prevent battery from exhausting, keep T-Stat plugged into a 110v wall outlet.



Battery charge level



Battery exhausted auto shutdown will begin soon



Battery charging



Fully charged and connected to 110v outlet



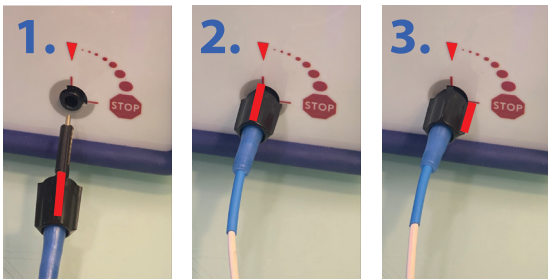
Charging and connected to 110v outlet



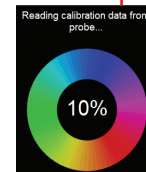
Contact Us

*** If any of the self test checks do not pass call 24/7 Technical Support: (346) 338-7828 or 34-MED-TSTAT**

SENSOR CONNECTING & MONITORING

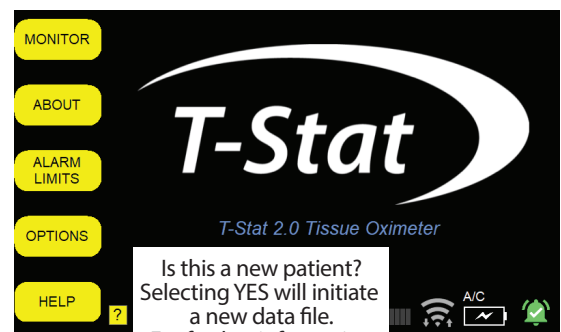


1. LINE UP THE RED INDICATORS
2. PUSH SENSOR IN ALL THE WAY
3. TURN TO THE RIGHT 90° TO THE STOP SIGN.



When sensor is engaged it will light up at the patient end and the sensor calibration will run. Once complete, T-Stat is ready to monitor.

- 1.) Select **MONITOR**
- 2.) You will be asked if this is a new patient. If "YES" it will start a new saved data folder. If "NO" the saved data will continue to be stored in the previous folder.
- 3.) You may **PAUSE** during MONITORING to continue with the same patient trend.
- 4.) Select **DONE** when ready to shut down.



Visit www.spectros.com for more information.

Yes

No

T2 IFU Rev 082021

SCREEN ELEMENTS

T-Stat 2.0

Tissue Oximeter & Single Use Sensors

StO2% TREND (Line graph showing StO2% over time)

StO2% VALUE (62% Saturation)

Hb TREND (Line graph showing rHemoglobin over time)

Hb VALUE (.13 mM rHemoglobin)

Trend Time Options (30 minutes)

PAUSE, **ALARM LIMITS**, **HELP** (Yellow menu buttons)

MONITORING (Green question mark icon)

MESSAGE BOARD, **LIGHT STRENGTH**, **ALARM STATUS** (Status indicators)

BATTERY INDICATOR, **WiFi ON (Green) & SIGNAL STRENGTH**, **OFF (Gray)** (Signal strength icons)

For more information about what the displayed message means click the "?"



Manual

34-MED-TSTAT

ALARM SETTINGS

ALARM LIMITS

Alarm limits can be accessed from the yellow menu button on the left of the screen. Adjust using the + or - for LOW StO2% and HIGH StO2%. Hide limits to return to the monitoring screen.

- ALARMING**
- ALARM DISABLED**
- ALARM ENABLED**

Low Saturation: 20% (Adjust: -10, +10, -1, +1)

High Saturation: 90% (Adjust: -10, +10, -1, +1)

Buttons: PAUSE, HIDE LIMITS, Disable Alarm

Current values: 55% Saturation, .10 mM rHemoglobin

SILENCE X 2 MIN

SILENCE X 5 MIN

From the monitoring screen you may silence the alarm for either 2 or 5 minutes. A 1 minute countdown will appear on the alarm icon.

5 **ALARM SILENCED 5 MIN**

2 **ALARM SILENCED 2 MIN**

WiFi & SHUTDOWN

ON CALL ACCESS

Current Connection: Disconnected

Buttons: Forget, Refresh, Disconnect, Wifi - ON, Wifi - OFF

Modem: Verizon Modem, AT&T Modem

Select REFRESH if you do not see the network you are looking for.

If you are connecting to WiFi select the network and enter the network passcode in the task bar, using the pop-up keyboard.

You may turn WiFi ON and OFF manually.



OnCall IFU

PROPER SHUTDOWN & STORAGE

To make sure the battery is charging while T-Stat is not in use, turn the toggle switch on the back to the ON position (0).

- 1.) **PAUSE**
- 2.) **DONE**
- 3.) Remove sensor and discard. All sensors are single use.
- 4.) Push silver blue power button to power down the device. Clean the T-Stat (alcohol wipes okay) and return to proper storage/department.



Share your stories! See what everyone has to say about T-Stat! #FLAPSAVED



Visit www.spectros.com for more information.

34-MED-TSTAT